

Open Frame LCD

Open Frame LCD

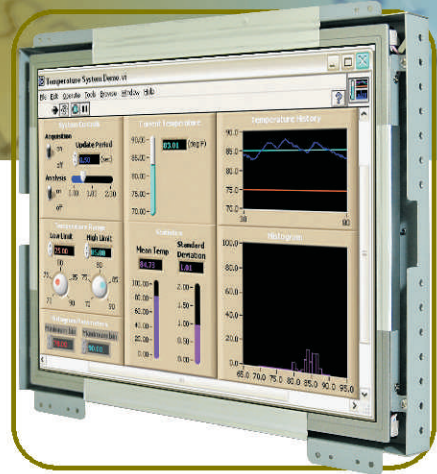
15"

Specifications

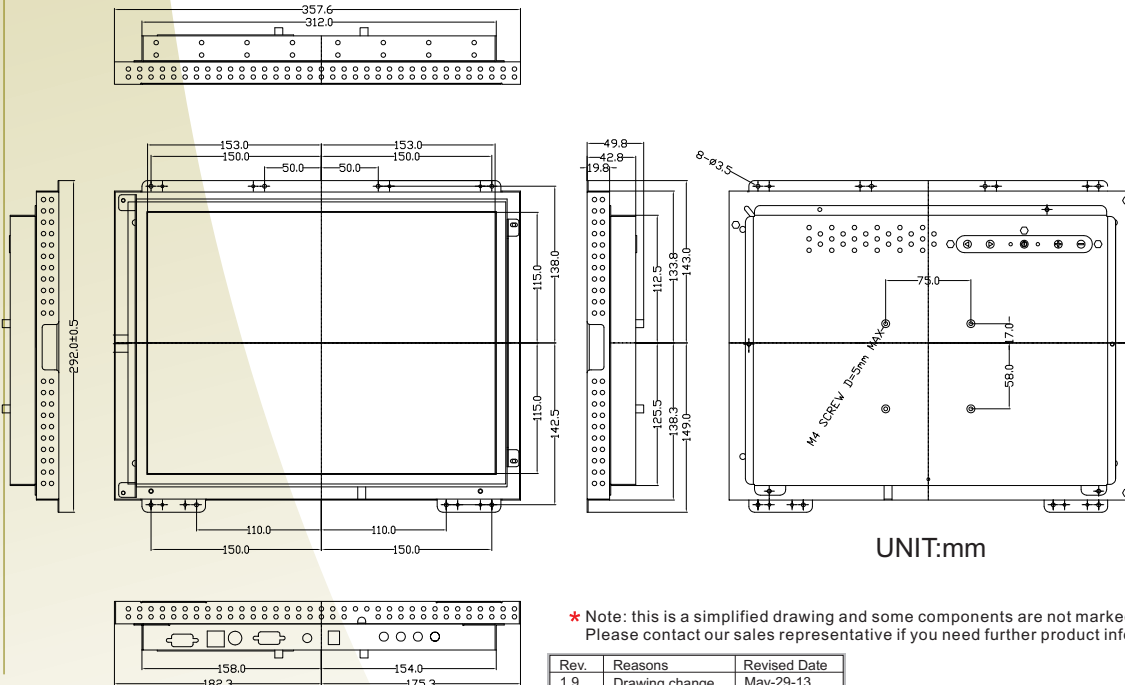


Model Name	R15L100-OFA1
Viewable Size Image	15"
Active Display Area(mm)	304.128(H) x 228.096(V)
Pixel Pitch(mm)	0.297(H) x 0.297(V)
Number of Pixels	1024 x 768
Contrast Ratio	700:1(typ.)
Display Color	16.2M
Brightness(cd/m ²)	550(typ.)
Viewing Angle(CR>=10)	-80~80(H);-70~70(V)
Synchronization Range	
Horizontal/Vertical	31.5~60.0KHz/60~75Hz
Recommended Resolution	1024x768@60Hz,75Hz
Signal Connector	15 pin D-Sub
Power Source	12V DC in, with External AC to DC Adapter (100~240V AC)
Power Consumption	20W typical, normal operation
Power Management	VESA DPMS Compliant
Plug & Play	VESA DDC 1/2B
Optional Video Input	S-Video, Composite
Optional DVI Input	Yes
Optional Touch Screen	Resistive, Capacitive
Need Special Housing	SAW, IR
Optional Protection glass (reflection rate<0.5%)	Optional
Operation Temperature	0°C~50°C

Remarks: R15L100 series= VGA input only
R15L110 series= VGA+Video Input



Mechanical Drawing



UNIT:mm

* Note: this is a simplified drawing and some components are not marked in detail. Please contact our sales representative if you need further product information

Rev.	Reasons	Revised Date
1.9	Drawing change	May-29-13
2.0	Change pic	June-13-13
2.1	Spec change	Dec-03-13