

Open Frame LCD

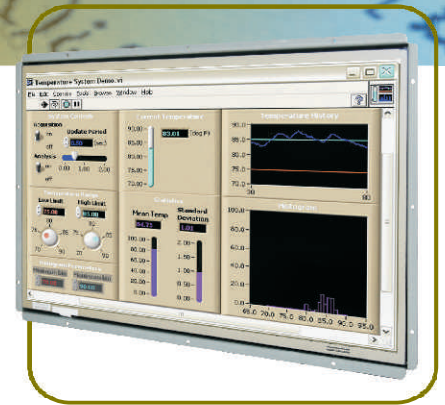
Open Frame LCD

18.5" Wide Specifications

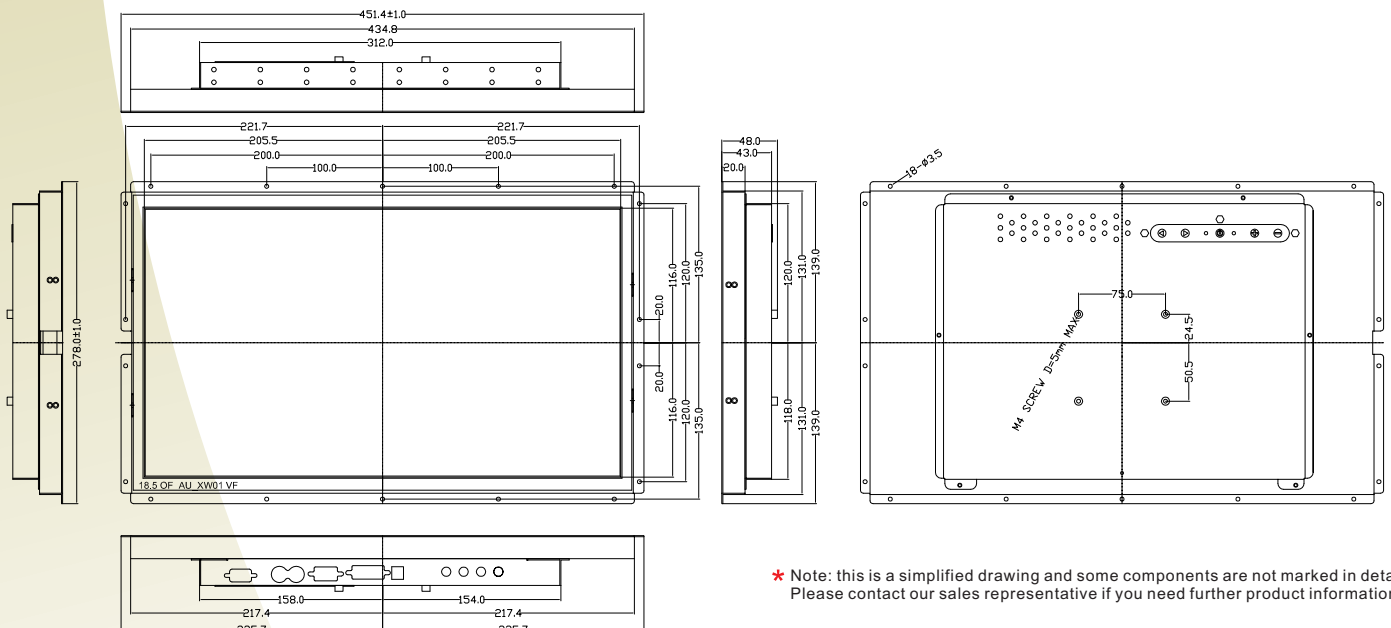


Model Name	W18L100-OFA2
Viewable Size Image	18.5" Wide
Active Display Area(mm)	409.8(H)x230.4(V)
Pixel Pitch(um)	0.3 (H) x 0.3(V)
Number of Pixels	1366 x 768
Contrast Ratio	1000:1(typ.)
Display Color	16.7 M
Brightness(cd/m ²)	250(typ.)
Viewing Angle(CR>=10)	-85~85(H);-80~80(V)
Synchronization Range	
Horizontal/Vertical	31.5~60.0KHz/60~75Hz
Recommended Resolution	1366 x 768@ 60Hz
Signal Connector	15 pin D-Sub
Power Source	12V DC in, with External AC to DC Adapter (100~240V AC)
Power Consumption	19W (Typ.)
Power Management	VESA DPMS Compliant
Plug & Play	VESA DDC 1/2B
Optional Video Input	S-Video/ Composite
Optional DVI Input	Yes
Optional Touch Screen	Resistive

Remarks: W18L100 series= VGA input only
W18L110 series= VGA+Video Input



Mechanical Drawing



* Note: this is a simplified drawing and some components are not marked in detail. Please contact our sales representative if you need further product information.

Rev.	Reasons	Revised Date
1.0	First release	Apr-19-13
1.1	Change pic	June-13-13